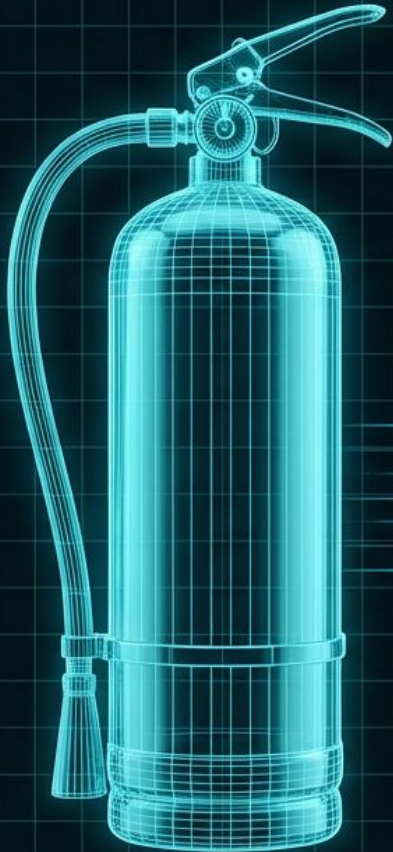


# THE GOVERNANCE MEMORY SYSTEM

AI-AUGMENTED DECISION SUPPORT INFRASTRUCTURE



# THE FIRE EXTINGUISHER PARADOX



- Governance is currently treated like a fire extinguisher: ignored until the building is burning.
- Most organizations treat governance as a box-ticking exercise while ignoring systemic stressors.
- **Result:** Interventions happen only after the crisis erupts, when the damage is irreversible.

# THE CORE PATHOLOGY: GOVERNANCE AMNESIA

Institutions make collective decisions, but context evaporates when contributors rotate.



**Procedural Fatigue:**  
Engagement declines as complexity increases.



**Informal Power Concentration:**  
Influence flows through off-chain channels, invisible to metrics.



**Legitimacy Fractures:**  
Trust erodes long before quantitative metrics deteriorate.



**Redundant Decision-Making:** The same conflicts and frictions reappear in cycles.

# THE HUMAN COST OF AMNESIA: VOICES FROM THE FIELD

Surface metrics obscure deeper dysfunctions like procedural fatigue and legitimacy fractures.



## ON LOSING KNOWLEDGE

"Projects often repeat the same problems... spin up another working group when there has already been one in the past."

— Prof. Ellie Rennie



## ON SHALLOW ACCOUNTABILITY

"Most DAO governance... stops at 'did the vote pass?'"

— Daniel Hwang



## ON UNINFORMED VOTING

"Validators often blind-vote with no commentary... Governance should be led by those who move the protocol forward."

— Park

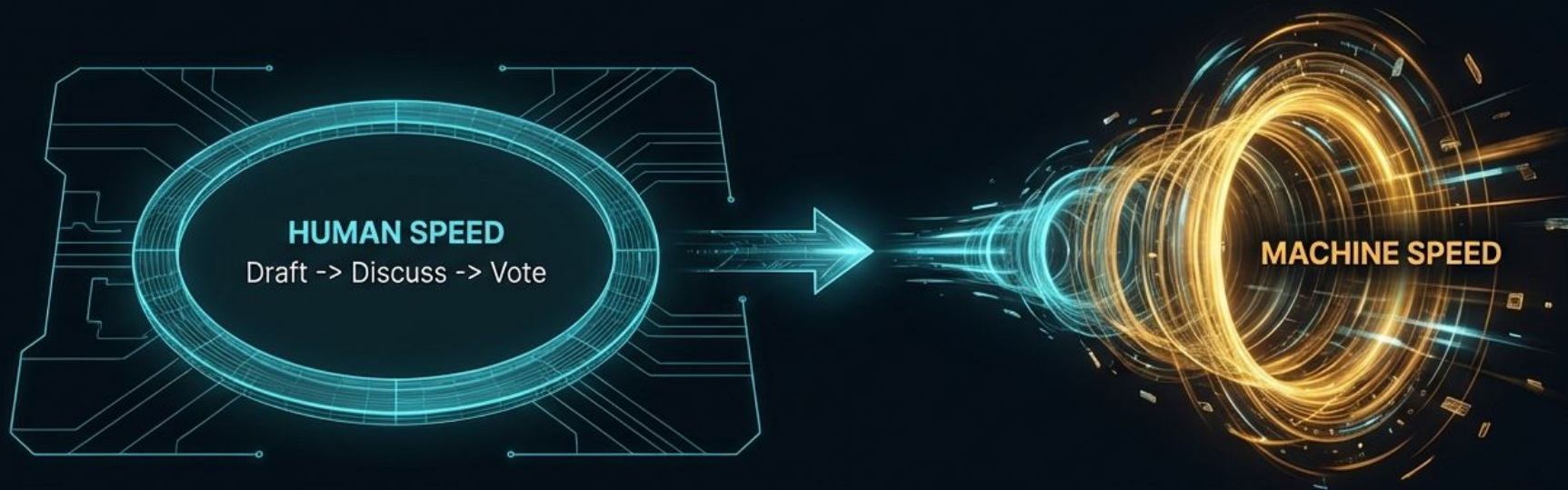


## ON HIDDEN POWER

"You go into a Discord and feel like, unless you are a top-tier engineer, you should not speak... People start to use governance to push an agenda..."

— Prof. Ellie Rennie

# THE ACCELERANT: AI COMPRESSES THE ERROR CYCLE



## AI Acceleration:

Agents repeat mistakes at machine speed.



## LLM Extraction:

Mining signals from unstructured data.



## Blockchain Testbed:

Transparent lab for validation.

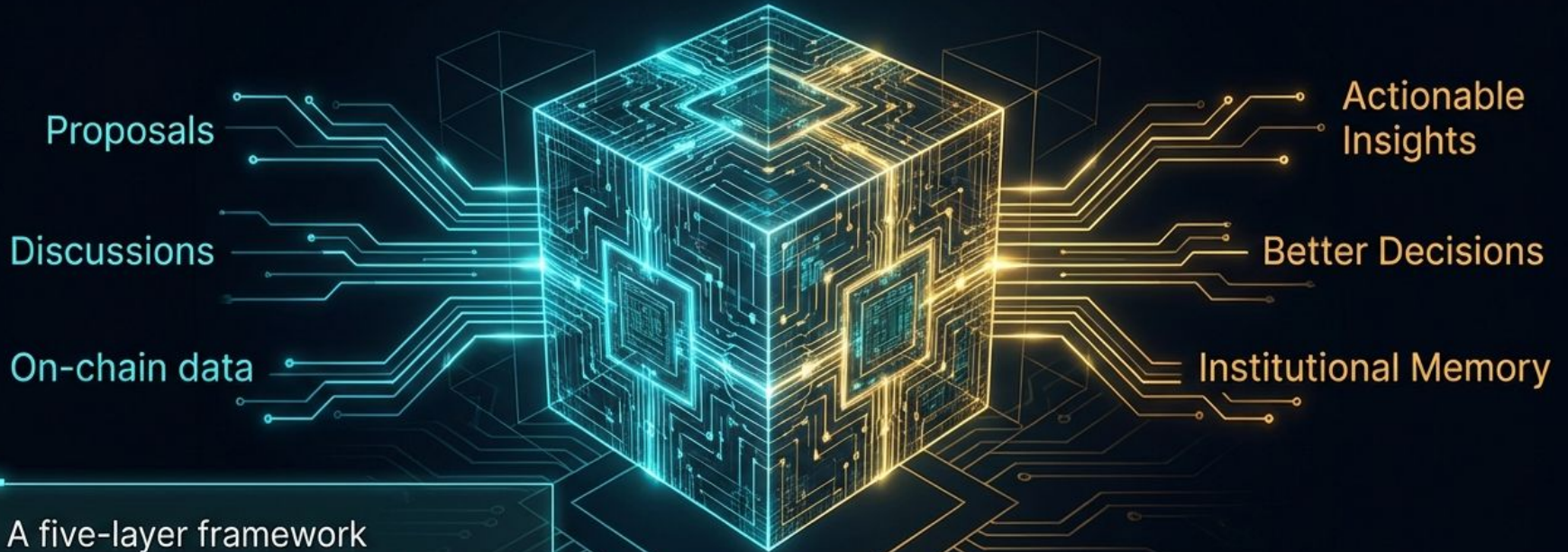


## Human Agency:

Risk of accountability loss.

# THE CURE: GOVERNANCE MEMORY SYSTEM (GMS)

From Rearview Mirror to Immune System.



A five-layer framework transforming isolated votes into **cumulative** knowledge.

# THE ARCHITECTURE OF INSTITUTIONAL MEMORY



**Recurring Themes & Frictions (RTF)** –  
AI detecting recurring friction points

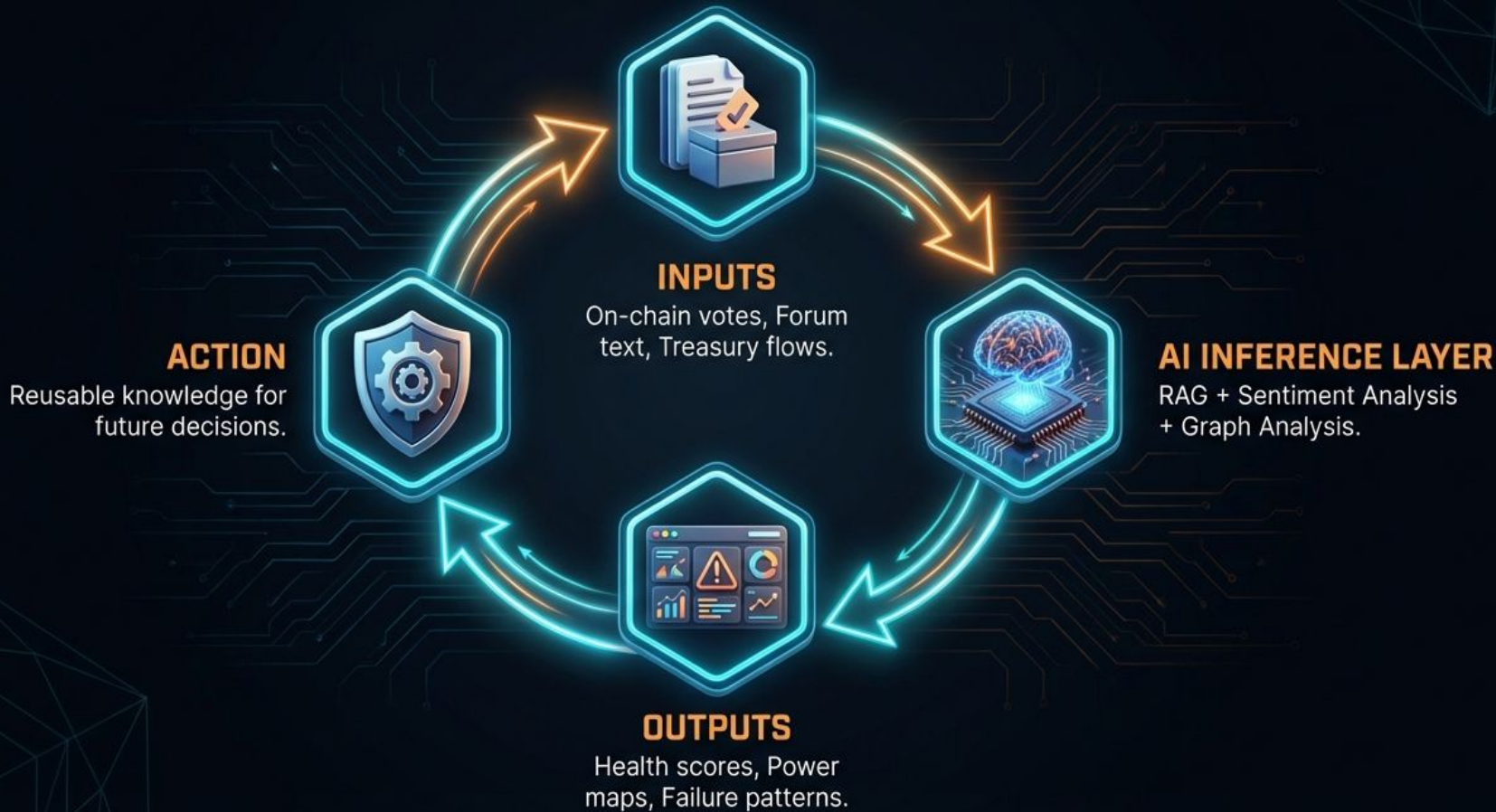
**Governance Health Index (GHI)** –  
System diagnostics

**Informal Power Mapping (IPM)** –  
Who really calls the shots?

**Outcome Review Anchors (ORA)** –  
Did the decision actually work?

**Proposal Lifecycle Metadata (PLM)** –  
Structured records of authorship &  
rationale

# CLOSING THE FEEDBACK LOOP IN REAL-TIME



# CASE FILES: THE COST OF AMNESIA

## CASE A: PANIC (JUNO PROTOCOL)



- **Event:** \$130M confiscated via panic voting.
- **Failure:** No precedent, no outcome tracking.
- **Result:** Legitimacy crisis, developer exodus, price crash.

## CASE B: DECAY (GITCOIN DAO)



- **Event:** Over-architecture of governance led to system fatigue.
- **Failure:** Surface metrics masked structural rot.
- **Result:** Collapse of participation quality & quantity.

# PROVEN IN THE LAB: BLOCKCHAIN GOVERNANCE

The Transparent Laboratory for Institutional Design.



**15+** Ecosystems  
Researched (Solana,  
Cosmos, Sui)



**Live Pilot:** NEAR  
Protocol Strategy  
Team Collaboration



## Academic Validation:

Under review at Token Engineering Research Symposium, under review at the cryptoeconomic systems journal and Cited in a dissertation about non-coercive AI governance.

**MetaGov Research Lab:**  
Cross-domain  
validation



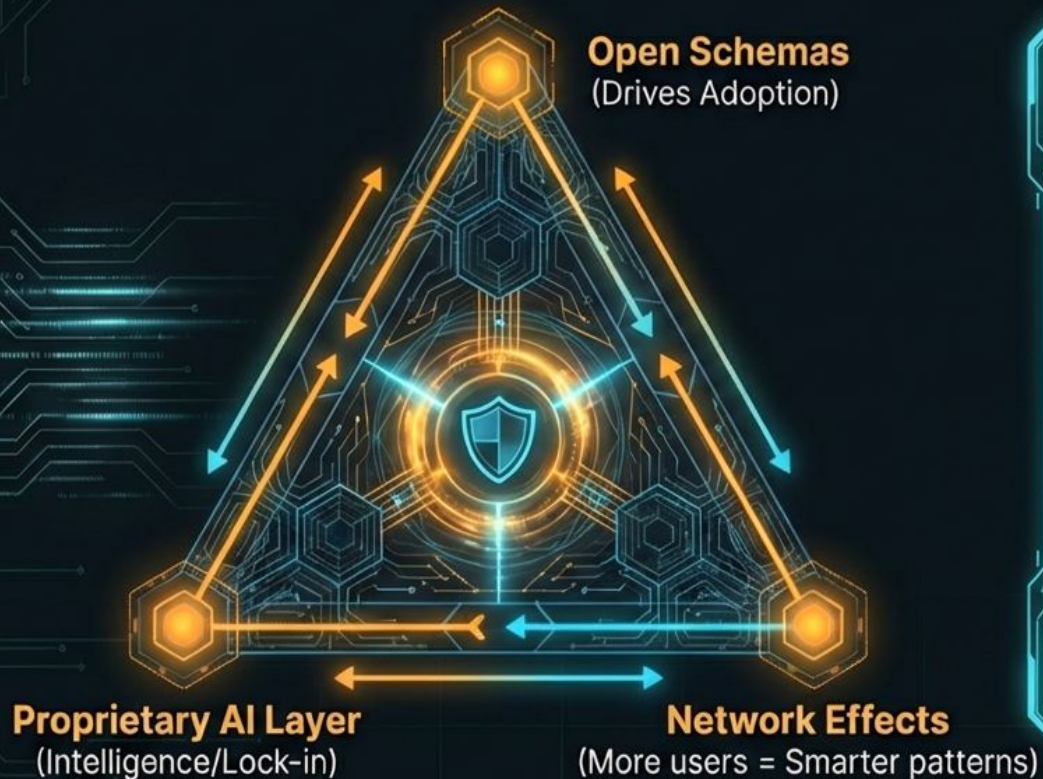
# GMS IS THE ONLY INFRASTRUCTURE WITH DYNAMIC FEEDBACK LOOPS.

	Tracks Decisions	Tracks Outcomes	Maps Informal Power	Predictive Alerts
Vote Trackers (Snapshot)	✓	✗	✗	✗
Dashboards (DeepDAO)	✓	✗	 Partial	✗
Docs (Notion)	✓	✗	✗	✗
<b>GMS (Ours)</b>	✓	✓	✓	✓

# FROM DAOs TO DEMOCRACIES



# BUSINESS MODEL & STRATEGIC MOAT



## REVENUE STREAMS

- **Protocol SaaS:**  
Subscription for dashboards
- **Consulting:**  
Audits & Custom Deployments
- **Cross-Protocol Intelligence:**  
Premium aggregated insights

# USE OF FUNDS & MILESTONES



## MVP DASHBOARD

Convert framework to software.



## AI PIPELINE

RAG + Graph Analysis engineering.



## EXPANSION

Extend NEAR pilot to 2-3 protocols.



## VALIDATION

GTM & Willingness-to-pay testing.

# BUILD THE GOVERNANCE COMMONS

Governance lessons learned in one organization  
become reusable knowledge for all.

Don't let history repeat itself.

We are building infrastructure that lets democracy  
and collective intelligence compound.

**GOAL: Build the governance  
infrastructure layer for the AI era.**

OCC RESEARCH